

THE SULLIVAN TRAIL A's NEWS

"Coming together is a beginning; keeping together is progress; working together is success."

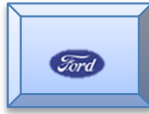
- Henry Ford



<http://www.sullivantrailas.com>
2008



1903
4,849,340 Produced



1927-1931



December 2016
Volume 9 Issue 9



President

Jim Morris
jim.morris2831@aol.com

Vice President

Don Bushart
dbjb806@icloud.com

Treasurer

Mark Harth
bearfarm14818@gmail.com

Secretary

Beverly Harding
stmafc@aol.com

Director At Large

Bill Haag
fingers5n5@aol.com

Newsletter Editor

Jim Morris

Website Liaison

Jerry Wilcox
jerrywilcox55@gmail.com

Webmaster

Nathan Reimer
nathan@reimerconsulting.com


Sullivan Trail A's Meetings:

- Monthly
- 2nd Tuesday September - June
- 7pm
- United Methodist Church
1034 W Broad St
Horseheads, NY

<http://sullivantrailas.com/>



<https://www.facebook.com/Sullivan-Trail-Model-A-Ford-Club-456895717849225/>



Editor's Note:

If you have a desire to help the Club but don't feel it's the right time for you to be an officer then you're welcome to contribute to the Newsletter. I'm always looking for good stories, photos, period ads, etc., to include in the Newsletter. Let me know that you'd like to help!

- Jim

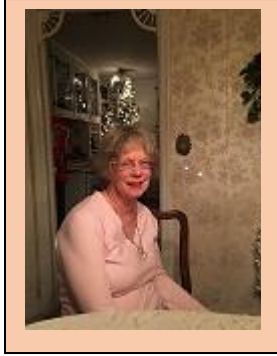


In This Issue

- From The President's Garage
- Upcoming Events
- Christmas Dinner 2016 Photos
- Tech Tips
- For Sale/Wanted
- Did you know
- MAFCA Membership

FROM THE PRESIDENT'S GARAGE

It's with great sadness that we must note the passing of Karren Harter on Sunday December 18, 2016. This comes as a shock to all of us. Many Club members happily enjoyed Barb, Larry, regular and dinner but for she brought in Methodist along with her and member of and desire to A Ford Club's continue to be



the Christmas dinner catered by Bill, Bonnie, and Karren. Karren was our dependable hostess not only for this all our regular meetings during which hot water, coffee, and anything else we needed. I believe that the United Church was her home away from home where she was an active member, late husband Bob who was also a significant contributing Church member Sullivan Trail A's. Karren's spirit of volunteerism, her unflappable energy help, guide, and support was a critical piece to our Sullivan Trail A's Model success. We will miss her greatly, her spirit and bubbly personality will with us.



Many thanks to our Club "caterers" who planned and pulled off a wonderful Christmas dinner on Tuesday December 13 at our regular meeting site at the Church. Thank you for a job superbly well done.

Be well everyone, enjoy family and friends over Christmas and end of year celebrations, and safe travels.

All for now, Jim



December, 2016

No Meeting in December



UPCOMING EVENTS

2016

National or Regional Events of Interest:

- MARC 2017 Membership Meet @ Shipshewana, Indiana Mar 23 – Mar 26
- MARC 2017 National Meet Gettysburg, Pennsylvania @ Wyndham Gettysburg Jul 30 – Aug 4

Next Regular Meeting of Sullivan Trail A's:

- January 10, 2017, United Methodist Church, 1034 W. Broad St., Horseheads, NY
-

Christmas 1928 – 1931



Christmas Dinner December 13, 2016

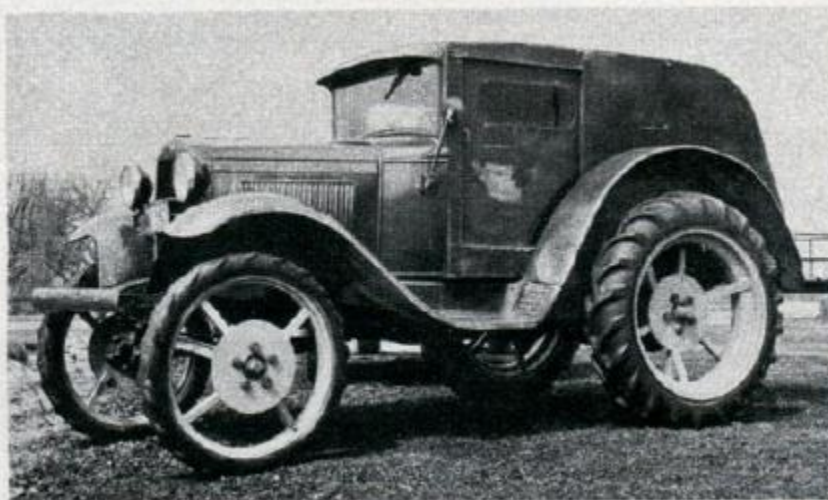






Mail Buggy

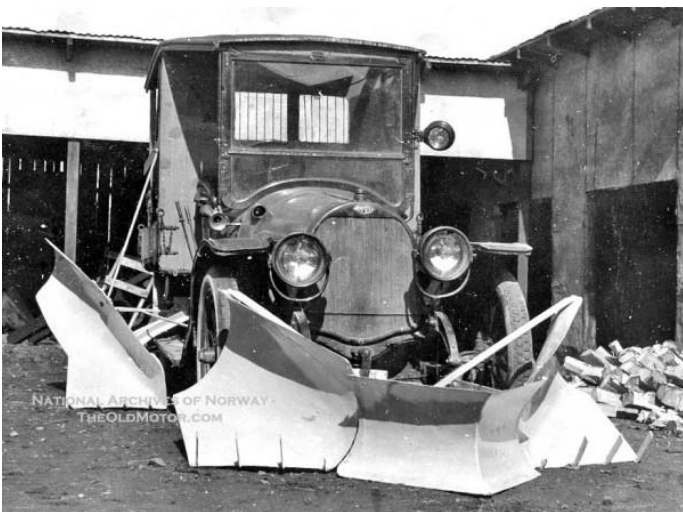
Plowing through the mud roads near Bartelso, Ill., is a weird vehicle that combines the traits of a tractor and a car. It was built for a rural mail carrier whose route carried him over wheel-deep mud roads in river-bottom land. Mounted on a Ford model-A truck chassis are four tractor wheels to give the vehicle additional road clearance and power in low speeds.



The Sullivan Trail A's News

Did (or do) you know ...

... that snow removal back in the days involved the use of these odd-looking machines?





How do I unstick a clutch disc?

Move the vehicle to an empty parking lot or street and aim it toward a direction you can safely drive. Start the engine with the transmission in neutral and run it for a while to warm it up. Once up to operating temperature, so that it will restart easily, turn engine off. With the transmission now in 1st gear, parking brake released, and the clutch depressed, start the engine. The vehicle will move along slowly in low gear at just above an idle, so be prepared.

While remembering to have the clutch pedal de-pressed, carefully start making quick accelerations and decelerations by going on and off the gas pedal. This puts stress on the clutch lining. Usually after about three or four quick accelerations it will loosen up.

If you need to stop the car before the clutch is free, you can slip the transmission into neutral and switch the key off. Put it back into 1st gear and then start the engine again to resume unsticking.

If that does not work, you will have to remove the engine and transmission from car to pry the clutch disc off the flywheel face.

- Jim Cannon

MAFCA Technical Director

The Restorer, November/December 2015



This is your space if you'd like to use it! Let your Editor know....



Dues Reminder:

- 21 Members have paid Club dues for 2017
- If you haven't paid your dues for 2017 then please get your dues in.
- Mark Harth will accept dues at our next meeting or alternatively you can mail them to me and I'll be sure to get them in Mark's hands.
- Jim Morris, 37 Dart Drive, Ithaca, NY 14850

Join The Model A Ford Club of America

New Membership

Name _____

Spouse's Name _____

Address _____

City _____

State _____ Zip _____

Country _____ Telephone _____

Permission to publish my telephone number in future Membership Rosters? Yes: _____ No: _____

Gift Membership

Name _____

Spouse's Name _____

Address _____

City _____

State _____ Zip _____

Country _____ Telephone _____

Permission to publish my telephone number in future Membership Rosters? Yes: _____ No: _____

Return this form and payment to:

MAFCA

250 South Cypress Street • La Habra, CA 90631-5515

Source: MAFCA Website

~ Membership Benefits ~

The Restorer magazine • Technical Support • Local Chapters • National Meets • Era Fashion Guidelines • "How To Restore" Series • Judging Standards and Restoration Guidelines

Dues per year are

U.S. Membership - \$40

Canada/Mexico Membership - \$50

International Membership - \$56

Make checks or money orders payable to
MAFCA

U.S. Funds Only

For Credit Card Orders ~

Visa / MasterCard (circle one)

Card Number:

Exp. Date:

Signature:

☐ Membership Only ☐ Membership + Initiation Package

Optional Initiation Package

For New Members Only

1 - Back issue of *The Restorer*

1 - MAFCA Lapel Pin

1 - MAFCA Decal

1 - Name Badge

Only \$10 extra

